

# ZENDURE

SuperCharged<sup>®</sup>

## Satellite Battery B6400/4600 User Manual



✉ [support@zendure.com](mailto:support@zendure.com)

# DISCLAIMER

Read all safety guidelines, warnings and other product information in this manual carefully, and read any labels or stickers attached to the product before using. Users take full responsibility for the safe usage and operation of this product. Familiarize yourself with relevant regulations in your area. You are solely responsible for being aware of all relevant regulations and using Zendure products in a way that is compliant.

Keep this manual for future reference.

# CONTENTS

## 1. Before You Begin

## 2. Specifications

## 3. Safety Guidelines

3.1 Usage

3.2 Disposal Guide

## 4. Important Tips

## 5. Getting Started

5.1 What's in the Box

5.2 Product Overview

5.3 Connect with SuperBase V

5.4 Connect with Another Satellite Battery

5.5 Recharging

5.6 Firmware Update

## 6. FAQs

## 7. FCC Caution

# 1. Before You Begin

The information contained herein is subject to change without notice.

For the latest version, please visit

<https://zendure.com/pages/download-center>.

# 2. Specifications

General	ZDSATB6400	ZDSATB4600
Weight	≈ 101lbs / 46.0kg	≈ 99lbs / 45.0kg
Dimensions	27.2x11.2x10.8in / 690 x 285 x 274mm	
Capacity	6,438Wh (126Ah/51.1V)	4,608Wh(90Ah/51.2V)
Wireless Type	Bluetooth, Wi-Fi	
Outputs		
Car Outlet (1)	12.6V $\overline{=}$ 10A, 126W Max	
Andersen (1)	12.6V $\overline{=}$ 30A, 378W* Max	
XT90 (1**)	12-60V $\overline{=}$ 10A, 600W Max (App enabled)	

\* 378W refers to the combined maximum output power of the Car Outlet and the Andersen port together.

\*\*The XT90 port is an input by default and can be switched to output via zendure App. It will reset to input mode any time the device is reset.

<b>Inputs</b>	ZDSATB6400	ZDSATB4600
XT90 (1)	12V-150VDC $\approx$ 10A, 600W Max	
USB-A	Firmware Update with USB Flash Drive	
<b>Battery</b>		
Cell Chemistry	SSB (Semi-solid State Battery)	LFP
Cycle Life	3,000+ cycles	6,000+ cycles
<b>Temperature*</b>		
Optimal Operating Temperature	59°F to 95°F (15°C to 30°C)	
Discharge Temperature	-4°F to 140°F (-20°C to 45°C)	
Charge Temperature	-4°F to 110°F (-20°C to 45°C)	0°F to 110°F (0°C to 45°C)
Storage Temperature	14°F to 95°F (-10°C to 35°C)	

\* The temperature figures above refer to ambient temperature.

## 3. Safety Guidelines

### 3.1 Usage

1. Store product in a cool and dry place.
2. Do not dispose of the product in heat or fire.
3. Do not expose to moisture or submerge it in liquid.
4. Do not use around strong static electricity or magnetic fields.
5. Do not disassemble the product. Consult official Zendure channels when service or repair is required. Incorrect disassembly or reassembly may result in a risk of fire or injury to persons.
6. When using the product, please strictly follow the operating environment temperature range specified in the user manual. If the temperature is too high, it may result in a fire or explosion; if the temperature is too low, the product performance may be severely reduced, or the product may cease to work.
7. Do not block or obstruct the fan during use or place the product in an unventilated or dusty area.
8. Ensure the product is not hit, dropped, or heavily vibrated. Securely fasten the product when transporting to avoid damage. If severely damaged, turn off the power source immediately and discontinue using the product.
9. If you accidentally drop the product into water during use, please place it in a safe open area, and stay away from it until it is completely dry. The dried product should not be used again and should be properly disposed of according to the Disposal Guide section of this manual.
10. Only clean the ports with a dry cloth.
11. Place on a flat surface to keep the product from falling over. If the product is overturned and severely damaged, turn it off immediately, place the battery in an open area, keep it away from people and combustibles, and dispose of it in accordance with local laws and regulations.
12. Keep out of reach of children and pets.

### 3.2 Disposal Guide

1. When possible, fully discharge the battery before disposing of it. Consult your local laws on battery recycling and disposal.
2. If the battery cannot be fully discharged due to product failure, contact a professional battery recycling company for further processing.
3. When disposing of secondary cells or batteries, keep cells or batteries of different electrochemical systems separate from each other.

## 4. Important Tips



It is recommended to use this product in an environment at 15 °C~30°C, away from water, fire and other sharp objects.



For long-term storage, please charge and discharge this product once every 3 months. That is, discharge the product to 30% first, and then recharge it to 60%.



For safety reasons, do not store this product in an environment above 35°C or below -10°C for a long time.



If the power of this product is lower than 1% after use, please charge it to 60% before storing it. Leaving the battery discharged for a long time can cause irreversible damage to the battery and shorten the service life of the product.



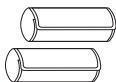
Do not disassemble the product. When service or repair is required, please consult official Zendure channels. Improper disassembly or reassembly may result in a risk of fire or personal injury.

## 5. Getting Started

### 5.1 What's in the Box



Satellite Battery

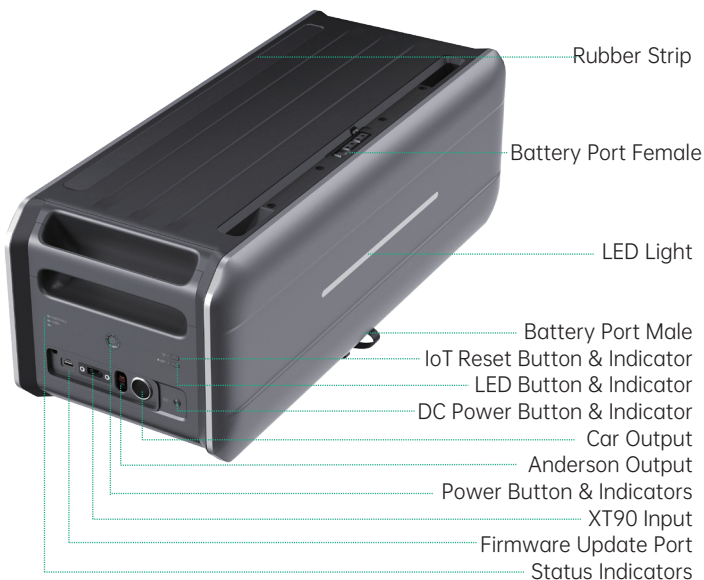


Handle Cover



User Manual

### 5.2 Product Overview



### Power Button

Press for 1 second to turn ON Satellite Battery, press and hold for 3 seconds to turn OFF Satellite Battery.

Briefly press to turn OFF the Power Indicators.

### IoT Reset Button

Press and hold for 3 seconds to reset Bluetooth and Wi-Fi connected.

### LED Button\*

Briefly press to turn ON/OFF LED Light.

Press for 1 second to cycle through LED lighting, ambiance, and SOS modes.

### DC Power Button

Briefly press to turn ON/OFF DC Outputs.

\* **Reset the device:** Press IoT Reset Button and LED Button simultaneously for 3 seconds.

### Indicators

Power Indicators	<ul style="list-style-type: none"><li>· Indicates Power ON/OFF</li><li>· 10 LED indicators, each representing 10%, to indicate current battery level, SoC (State of Charge) level and firmware update status.</li></ul>
IoT Indicator	<ul style="list-style-type: none"><li>· Waiting for pairing: the indicator flashes</li><li>· Connected the indicator is on</li></ul>
LED Indicator	<ul style="list-style-type: none"><li>· Indicates LED ON/OFF</li></ul>
DC Power Indicator	<ul style="list-style-type: none"><li>· Indicates DC power ON/OFF</li></ul>
Status Indicators	<ul style="list-style-type: none"><li>· Fault: there is some error, please check it in detail via Zendure App</li><li>· Overload: there is overload protection; please remove the load device</li><li>· Hot/Cold: there is high temperature or low temperature protection, normal operation will resume automatically after battery reaches appropriate temperature.</li></ul>

## 5.3 Connect with Satellite Battery

SuperBase V can be connected to a Satellite Battery for capacity expansion. A Battery Cable (not included) is needed. One SuperBase V can connect with up to 4 Satellite Battery units. Only stack one Satellite Battery on top of the main unit. Refer to the user manual of the SuperBase V for detailed instructions.

For satellite battery disconnection, turn off both SBV and satellite battery first, then to pull off both sides of the battery cable after unscrewing the screws.

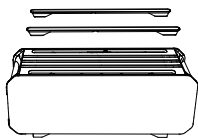
#### Tips:

- It's recommended that both SuperBase V and Satellite Battery are turned off before connection.
- Make sure to tighten the screw on both sides after connecting the battery cable.
- The Satellite Battery icon will show up on the display after connection; then you can start charging or discharging.
- Do not connect the SuperBase V to the battery during charging/discharging process.
- Do not touch the metal pins of the ports with your hands or other objects. Gently clean them with a dry cloth when necessary.
- Tightly connect the Battery Cable with SuperBase V and Satellite Battery. A bad connection can affect the device's performance or lead to a fire.

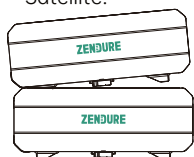


## 5.4 Connect with Another Satellite Battery

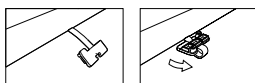
A Satellite Battery can be stacked on and connected to another unit. Satellite batteries stacked onto one another do not require a Battery Cable for connection.



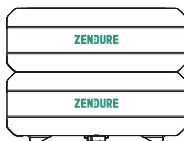
1. Remove the Rubber Strips from the top of the lower Satellite.



3. Align and place two of the feet in their proper place.



2. Remove the Protective Cover from the bottom of the upper Satellite.



4. Gently align the two units until all feet are settled into place.



### Tips:

- It's recommended that all Satellite Battery units are turned off before connection.
- After power on, they will flash (LED Light) 3 times and beep 3 times; then you can start charging or discharging.
- Do not connect them during charging/discharging process.
- Do not touch the metal pins of the ports with your hands or other objects. Gently clean them with a dry cloth when necessary.
- Battery Mounting Bracket is optional for fixing all the Satellite Battery units securely.

## 5.5 Recharging

The Satellite Battery can be charged via SuperBase V, or via XT90 input port from a solar panel or car battery. When charging from solar panels or a car, make sure the XT90 port is set to input mode.

## 5.6 Firmware Update

When using your Satellite for the first time, please check and update to the latest firmware. There are two methods:

### 1) USB Flash Drive via Firmware Update Port

Step 1: Download the latest firmware version onto a USB Flash Drive.

Step 2: Insert the USB Flash Drive into the Firmware Update Port.

Step 3: Satellite Battery will begin update, and the Fault Indicator, Overload Indicator, and Hot/Cold Indicator will all appear red, Indicators will turn off when update is complete.

### 2) Zendure App over-the-air (OTA) update

Read the Zendure App user guide and access the download link here:

<https://zendure.com/pages/download-center>



### Privacy Policy

By using Zendure Products, Applications and Services, you consent to the Zendure Terms of Use and Privacy Policy, which you can access via the "About" section of the "User" page in the Zendure App.

### Tips:

- Do Not turn off the device during the firmware update .
- Please update the firmware when the capacity is more than 20%, in order to have enough power to complete the update.

## 6. FAQs

**Can Satellite Battery B6400 (or B4600) connect with SuperBase V4600 (or V6400)?**

No, it can't, as they use different battery types.

**How many Satellite batteries can be connected to a single SuperBase V?**

For each SuperBase V, you can connect up to 4 Satellite Battery units.

**Can it charge and discharge at the same time?**

Yes. It supports pass-through charging.

**Can a Satellite Battery be charged with solar panels from a different brand?**

Yes, a Satellite Battery can be charged by other solar panels with voltage ranging from 12V to 150V; Zendure's 400W Solar Panel has been thoroughly tested with Satellite Batteries and remains our recommendation.

**How do I store my Satellite Battery?**

For long-term storage, please charge and discharge this product once every 3 months. That is, discharge the product to 30% first, and then recharge it to 60%.

## 7. FCC Caution:

### FCC STATEMENT

1. This device complies with Part 15 of the FCC Rules. Operation is subject to the following two conditions:
  - (1) This device may not cause harmful interference, and
  - (2) This device must accept any interference received, including interference that may cause undesired operation.
2. any changes or modifications not expressly approved by the party responsible for compliance could void the user's authority to operate the equipment.

### NOTE:

This equipment has been tested and found to comply with the limits for a Class B digital device, pursuant to Part 15 of the FCC Rules. These limits are designed to provide reasonable protection against harmful interference in a residential installation.

This equipment generates uses and can radiate radio frequency energy and, if not installed and used in accordance with the instructions, may cause harmful interference to radio communications.

However, there is no guarantee that interference will not occur in a particular installation. If this equipment does cause harmful interference to radio or television reception, which can be determined by turning the equipment off and on, the user is encouraged to try to correct the interference by one or more of the following measures:

- Reorient or relocate the receiving antenna.
- Increase the separation between the equipment and receiver.
- Connect the equipment into an outlet on a circuit different from that to which the receiver is connected.
- Consult the dealer or an experienced radio/TV technician for help.

### FCC Radiation Exposure Statement

This equipment complies with FCC radiation exposure limits set forth for an uncontrolled environment. This equipment should be installed and operated with minimum distance of 20cm between the radiator & your body.



**ZENDURE**

Zendure USA Inc.  
Phone: 800-991-6148 (US)  
Office Hours: Mon - Fri 9:00 - 17:00 PST  
Support / Contact: [www.zendure.com/support](http://www.zendure.com/support)  
Website: [www.zendure.com](http://www.zendure.com)

© 2023 Zendure USA Inc. All Rights Reserved.  
Printed on recycled materials. MADE IN CHINA



Li-ion 20

